

## SPARE PARTS

### SPARE PARTS - FC1336



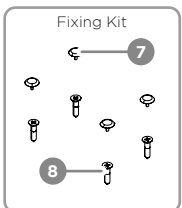
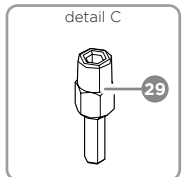
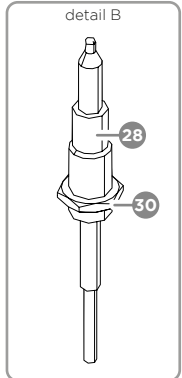
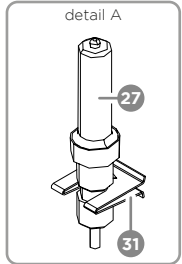
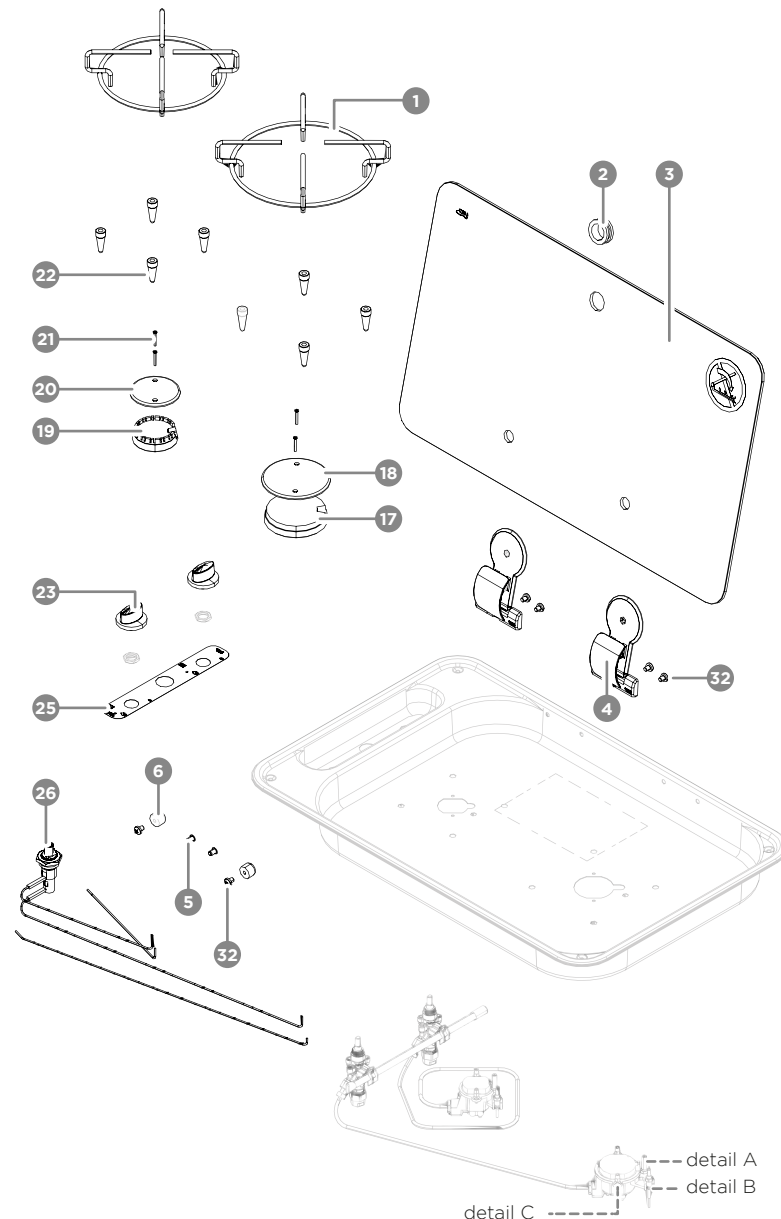
The column "Pos." refers to the exploded drawing "TYPE FC1336".

CODE COMPONENT	POS.	COMPONENT
2000008	4	Hinge for glass lids
3000506	3	Glass lid FC1336
3000083	22	Tall rubber bushing for pan holders
3000073	1	Wire pan holder for AUX burner
3000074	1	Wire pan holder for SR burner
3000454	6	Silentblock Ø 15
4000026	29	2nd series lid stud bolt
4000170	2	Glass lid cable gland
4000224	7	Intense black screw cap
4000260	23	Black/chrome knob Ø 34
4000031	30	Universal nut for thermocouple
4000069	28	Thermocouple for fast-on magnet cock
4000025	19	Burner spreader for 2nd series AUX burner
4000021	20	Ø 55 perforated and enamelled cover 2nd series AUX burner
4000024	17	Burner spreader for 2nd series SR burner
4000019	18	Ø 75 perforated and enamelled cover 2nd series SR burner
4000153	5	Cap for blind holes Ø 5.5 PE black
4000318	21	Countersunk flat head screw + M2.5 x 18 DIN EN ISO 7046 GV
4000223	8	Chipboard screw to secure the hob unit
7000138	-	Glass lid flame label
4000253	26	Short piezo igniter 18 x 1.5 mm
4000321	37	Burner lighting glow plug L480
4000232	27	Burner lighting glow plug L350
4000137	31	Clip for glow plug
4000229	32	5 x 6 CH screw to secure the hinge and silentblock
3000596	25	Control panel label

### E VERSION - ELECTRONIC LIGHTING

CODE COMPONENT	POS.	COMPONENT
4000319	-	Single-pole lighting button - ø 18 mm
2000147	-	12V generator kit + assembly bracket
4000168	-	Universal lighting cable (-)
4000169	-	IGN lighting cable L320
4000297	-	IGN lighting cable 2 (+)
4000232	27	Burner lighting glow plug L350
4000321	37	Burner lighting glow plug L480
4000137	31	Clip for glow plug
3000596	25	Control panel label

### TYPE FC1336



detail A  
detail B  
detail C